



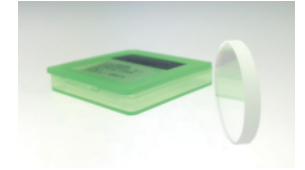
RAYTOOLS

Spare Parts Catalog

@202210

Including Cover glass ,Collimation lens ,Focus lens ,Collimation lens assembly and Focus lens assembly etc.

Cover Glass



Part Code	Size(mm) (Diameter x Thickness)	Material	Wavelength (nm)	Power Rating (KW)	Location	Shape	Applicable Models of Laser Heads
211LCG0020	24.9mm x 1.5mm	Fused Silica	1064nm	4KW	Top	Flat	BT210S/BT240S/BM109/BM109TC BM110/BM111/BM111TC/BM111E/BD04K
211LCG0037	27.9mm x 4.1mm	Fused Silica	1064nm	4KW	Middle/Bottom	Flat	BT210S/BT240S/BM109/BM109TC/ BM110/BM111/BM111TC/BM111E/BD04K
211LCG0076	38.1mm x 1.6mm	Fused Silica	1064nm	12KW	Top	Flat	BM114S/BM114TC
211LCG0045	37mm x 1.6mm	Fused Silica	1064nm	12KW	Top/Middle	Flat	BM114/BM114E/BM115 3.0/BM115E
110255IAG0004	37mm x 7mm	Fused Silica	1064nm	6KW	Bottom	Flat	BM114/BM114S/BM114TC/BM114E
211LCG0078	37mm x 7mm	Fused Silica	1064nm	12KW	Middle/Bottom	Flat	BS08K/BD08K/BM115 3.0/ BM115E/BS12K
211LCG0086	24.9mm x 1.5mm	Fused Silica	1064nm	15KW	Top	Flat	BS08K/BD08K/BM115E/BS12K

Collimation Lens / Focus Lens



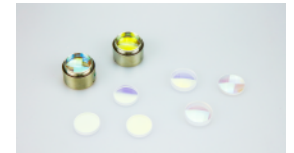
Part Code	Item	Diameter (mm)	Material	Wavelength (nm)	Power Rating (KW)	Focus Length (mm)	Shape	Applicable Models of Laser Heads
110255AACBHD0019	Collimation lens	28mm	Fused Silica	1064nm	1.5KW	100	Meniscus	BT210S/BM109
110255AAFBHD0020	Collimation lens	28mm	Fused Silica	1064nm	1.5KW	100	Biconvex	
110255AACBHD0021	Focus lens	28mm	Fused Silica	1064nm	1.5KW	125	Meniscus	
110255AAFBHD0022	Focus lens	28mm	Fused Silica	1064nm	1.5KW	125	Biconvex	
110255AAFBHD0025	Focus lens	28mm	Fused Silica	1064nm	1.5KW	150	Biconvex	
110255AACBHD0026	Focus lens	28mm	Fused Silica	1064nm	1.5KW	150	Meniscus	

Part Code	Item	Diameter (mm)	Material	Wavelength (nm)	Power Rating (KW)	Focus Length (mm)	Shape	Applicable Models of Laser Heads
110255AAEBHE0096	Collimation lens	30mm	Fused Silica	1064nm	2KW	100	Meniscus	BT240/BT240S 2KW
110255AACBHE0095	Collimation lens	30mm	Fused Silica	1064nm	2KW	100	Biconvex	
110255AACBHE0097	Focus lens	30mm	Fused Silica	1064nm	2KW	125	Biconvex	
110255AAEBHE0098	Focus lens	30mm	Fused Silica	1064nm	2KW	125	Meniscus	
110255AAFBHE0089	Collimation lens	30mm	Fused Silica	1064nm	3.3KW	100	Meniscus	BT240S 3.3KW/BM110/BM111
110255AACBHE0090	Collimation lens	30mm	Fused Silica	1064nm	3.3KW	100	Biconvex	
110255AACBHE0092	Focus lens	30mm	Fused Silica	1064nm	3.3KW	125	Biconvex	
110255AAFBHE0091	Focus lens	30mm	Fused Silica	1064nm	3.3KW	125	Meniscus	
110255AACBHE0093	Focus lens	30mm	Fused Silica	1064nm	3.3KW	155	Biconvex	
110255AAEBHE0094	Focus lens	30mm	Fused Silica	1064nm	3.3KW	155	Meniscus	
110255AACBHE0126	Focus lens	30mm	Fused Silica	1064nm	3.3KW	190.5	Biconvex	BM114S (BMH114S01A/B, BMH114S02A/B)
110255AAFBHE0127	Focus lens	30mm	Fused Silica	1064nm	3.3KW	190.5	Meniscus	
3250010343 (to replace 110255AAFBHP0181)	Collimation lens	37mm	Fused Silica	1064nm	8KW	100	Meniscus	
3250010346 (to replace 110255AACBHP0180)	Collimation lens	37mm	Fused Silica	1064nm	8KW	100	Biconvex	
3250010347 (to replace 110255AACBHP0182)	Focus lens	37mm	Fused Silica	1064nm	8KW	150	Biconvex	BM114S (BMH114S01A/B, BMH114S02A/B)
3250010344 (to replace 110255AAFBHP0183)	Focus lens	37mm	Fused Silica	1064nm	8KW	150	Meniscus	
3250010348 (to replace 110255AACBDG0082)	Focus lens	38.1mm	Fused Silica	1064nm	8KW	200	Biconvex	
3250010345 (to replace 110255AAFBDC0083)	Focus lens	38.1mm	Fused Silica	1064nm	8KW	200	Meniscus	

Part Code	Item	Diameter (mm)	Material	Wavelength (nm)	Power Rating (KW)	Focus Length	Shape	Applicable Models of Laser Heads
3250010323	Collimation lens	37mm	Fused Silica	1064nm	6KW	100	Meniscus	
3250010322	Collimation lens	37mm	Fused Silica	1064nm	6KW	100	Biconvex	
3250010324	Focus lens	37mm	Fused Silica	1064nm	6KW	150	Biconvex	BM114S(BMH114S22A, BMH114S23A) BM114(BM11401111)
3250010325	Focus lens	37mm	Fused Silica	1064nm	6KW	150	Meniscus	BM114E(BMH114E01A, BMH114E02A)
3250010326	Focus lens	37mm	Fused Silica	1064nm	6KW	200	Biconvex	
3250010327	Focus lens	37mm	Fused Silica	1064nm	6KW	200	Meniscus	
3250010323	Collimation lens	37mm	Fused Silica	1064nm	6KW	100	Meniscus	
3250010322	Collimation lens	37mm	Fused Silica	1064nm	6KW	100	Biconvex	
3250010324	Focus lens	37mm	Fused Silica	1064nm	6KW	150	Biconvex	BM114 (BM11401111, BM11401121, BM11416111, BM11416121, BM11401111S, BM11401121S, BM11416111S, BM11416121S)
3250010325	Focus lens	37mm	Fused Silica	1064nm	6KW	150	Meniscus	
3250010419	Focus lens	37mm	Fused Silica	1064nm	12KW	200	Biconvex	
3250010420	Focus lens	37mm	Fused Silica	1064nm	12KW	200	Meniscus	
3250010286	Collimation lens	37mm	Fused Silica	1064nm	12KW	100	Aspherical	
3250010287	Focus lens	37mm	Fused Silica	1064nm	12KW	150	Biconvex	BM115 3.0 6KW/BM115E 6KW
3250010288	Focus lens	37mm	Fused Silica	1064nm	12KW	150	Meniscus	(BM11510111, BM11510121, BMH115E01A, BMH115E02A)
3250010289	Focus lens	37mm	Fused Silica	1064nm	12KW	200	Biconvex	
3250010290	Focus lens	37mm	Fused Silica	1064nm	12KW	200	Meniscus	

Part Code	Item	Diameter (mm)	Material	Wavelength (nm)	Power Rating (KW)	Focus Length	Shape	Applicable Models of Laser Heads
110255ABABHG0244	Collimation lens	38.1mm	Fused Silica	1064nm	14KW	100	Aspherical	BM115 3.0 12KW/BM115E 12KW (BMH115E03A/BM11513121)
110255ABABHG0245	Focus lens	38.1mm	Fused Silica	1064nm	14KW	200	Aspherical	
3250010281	Collimation lens	37mm	Fused Silica	1064nm	8KW	100	Meniscus	BS08K
3250010280	Collimation lens	37mm	Fused Silica	1064nm	8KW	100	Biconvex	
3250010419	Focus lens	37mm	Fused Silica	1064nm	12KW	200	Biconvex	
3250010420	Focus lens	37mm	Fused Silica	1064nm	12KW	200	Meniscus	

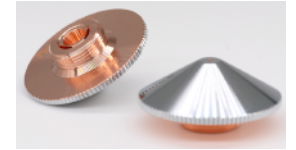
Collimation / Focus Lens Assembly



Part Code	Item	Lens Diameter (mm)	Lens Material	Wavelength (nm)	Power Rating (KW)	Focus Length (mm)	Applicable Models of Laser Heads
120A60021A	Collimation lens assembly	30mm	Fused Silica	1064nm	2KW	100	BT240S 2KW
120A60023A	Focus lens assembly	30mm	Fused Silica	1064nm	2KW	125	
120A60022A	Collimation lens assembly	30mm	Fused Silica	1064nm	3.3KW	100	BT240S 3.3KW
120A60025A	Focus lens assembly	30mm	Fused Silica	1064nm	3.3KW	155	

Part Code	Item	Lens Diameter (mm)	Lens Material	Wavelength (nm)	Power Rating (KW)	Focus Length (mm)	Applicable Models of Laser Heads
120AH0600A	Collimation lens assembly	28mm	Fused Silica	1064nm	1.5KW	100	BM109
120AH0700A	Focus lens assembly	28mm	Fused Silica	1064nm	1.5KW	125	
120AH0800A	Focus lens assembly	28mm	Fused Silica	1064nm	1.5KW	150	
120AG0600A	Collimation lens assembly	30mm	Fused Silica	1064nm	3.3KW	100	BM110 BM111
120AG0700A	Focus lens assembly	30mm	Fused Silica	1064nm	3.3KW	125	
120AG0800A	Focus lens assembly	30mm	Fused Silica	1064nm	3.3KW	155	
120AG1400A	Focus lens assembly	30mm	Fused Silica	1064nm	3.3KW	200	
120A32700A	Collimation lens assembly	37mm	Fused Silica	1064nm	8KW	100	BM114S (BMH114S01B, BMH114S02B)
120A30700A	Focus lens assembly	37mm	Fused Silica	1064nm	8KW	150	
120A30800A	Focus lens assembly	38.1mm	Fused Silica	1064nm	8KW	200	
120BH1001A	Collimation lens assembly	37mm	Fused Silica	1064nm	6KW	100	BM114S (BMH114S22A, BMH114S23A)
120BH1002A	Focus lens assembly	37mm	Fused Silica	1064nm	6KW	150	
120BH1003A	Focus lens assembly	37mm	Fused Silica	1064nm	6KW	200	
120BH1001A	Collimation lens assembly	37mm	Fused Silica	1064nm	6KW	100	BM114 (BM11401111, BM11401121, BM11416111, BM11416121, BM11401111S, BM11401121S, BM11416111S, BM11416121S)
120BH1002A	Focus lens assembly	37mm	Fused Silica	1064nm	6KW	150	
120BH1008A	Focus lens assembly	37mm	Fused Silica	1064nm	12KW	200	
120AU4700A	Collimation lens assembly	37mm	Fused Silica	1064nm	12KW	100	BM115 3.0 6KW/BM115E 6KW (BM11510111, BM11510121, BMH115E01A, BMH115E02A)
120AU4500A	Focus lens assembly	37mm	Fused Silica	1064nm	12KW	150	
120AU4600A	Focus lens assembly	37mm	Fused Silica	1064nm	12KW	200	

Nozzle



Part Code	Item	Type	Tip Size (mm)	Material	Coating	Applicable Models of Laser Heads
120GJT0508	Nozzle	Single layer	0.8mm	Copper T2	N/A	
120GJT0510	Nozzle	Single layer	1.0mm	Copper T2	N/A	
120GJT0512	Nozzle	Single layer	1.2mm	Copper T2	N/A	
120GJT0515	Nozzle	Single layer	1.5mm	Copper T2	N/A	
120GJT0520	Nozzle	Single layer	2.0mm	Copper T2	N/A	
120GJT0525	Nozzle	Single layer	2.5mm	Copper T2	N/A	
120GJT0530	Nozzle	Single layer	3.0mm	Copper T2	N/A	
120GJT0535	Nozzle	Single layer	3.5mm	Copper T2	N/A	
120GJT0540	Nozzle	Single layer	4.0mm	Copper T2	N/A	
120GJT0545	Nozzle	Single layer	4.5mm	Copper T2	N/A	
120GJT0550	Nozzle	Single layer	5.0mm	Copper T2	N/A	
120GJT0608	Nozzle	Double layer	0.8mm	Copper T2	Chroming	BT240S/BM109/BM110/ BM111/BM111E/BM114S
120GJT0610	Nozzle	Double layer	1.0mm	Copper T2	Chroming	
120GJT0612	Nozzle	Double layer	1.2mm	Copper T2	Chroming	
120GJT0615	Nozzle	Double layer	1.5mm	Copper T2	Chroming	
120GJT0620	Nozzle	Double layer	2.0mm	Copper T2	Chroming	
120GJT0625	Nozzle	Double layer	2.5mm	Copper T2	Chroming	
120GJT0630	Nozzle	Double layer	3.0mm	Copper T2	Chroming	
120GJT0635	Nozzle	Double layer	3.5mm	Copper T2	Chroming	
120GJT0640	Nozzle	Double layer	4.0mm	Copper T2	Chroming	
120GJT0645	Nozzle	Double layer	4.5mm	Copper T2	Chroming	
120GJT0650	Nozzle	Double layer	5.0mm	Copper T2	Chroming	

Nozzle



Part Code	Item	Type	Tip Size (mm)	Material	Coating	Applicable Models of Laser Heads
211GJT0337	Nozzle	Single layer	0.8mm	Copper T2	N/A	
211GJT0058	Nozzle	Single layer	1.0mm	Copper T2	N/A	
211GJT0261	Nozzle	Single layer	1.2mm	Copper T2	N/A	
211GJT0039	Nozzle	Single layer	1.5mm	Copper T2	N/A	
211GJT0098	Nozzle	Single layer	2.0mm	Copper T2	N/A	
211GJT0168	Nozzle	Single layer	2.5mm	Copper T2	N/A	
211GJT0138	Nozzle	Single layer	3.0mm	Copper T2	N/A	
211GJT0335	Nozzle	Single layer	3.5mm	Copper T2	N/A	
211GJT0336	Nozzle	Single layer	4.0mm	Copper T2	N/A	BT210/BT210S
211GJT0256	Nozzle	Double layer	1.0mm	Copper T2	N/A	
211GJT0284	Nozzle	Double layer	1.2mm	Copper T2	N/A	
211GJT0257	Nozzle	Double layer	1.5mm	Copper T2	N/A	
211GJT0258	Nozzle	Double layer	2.0mm	Copper T2	N/A	
211GJT0285	Nozzle	Double layer	2.5mm	Copper T2	N/A	
211GJT0416	Nozzle	Double layer	3.0mm	Copper T2	N/A	
211GJT0414	Nozzle	Double layer	3.5mm	Copper T2	N/A	
211GJT0415	Nozzle	Double layer	4.0mm	Copper T2	N/A	

Nozzle



Part code	Item	Type	Tip Size	Material	Coating	Applicable Models of Laser Heads
120GJT0910	3D nozzle	Single layer	1.0mm	Copper T2	N/A	
120GJT0912	3D nozzle	Single layer	1.2mm	Copper T2	N/A	
120GJT0915	3D nozzle	Single layer	1.5mm	Copper T2	N/A	
120GJT0920	3D nozzle	Single layer	2.0mm	Copper T2	N/A	
120GJT0925	3D nozzle	Single layer	2.5mm	Copper T2	N/A	
120GJT0930	3D nozzle	Single layer	3.0mm	Copper T2	N/A	
120GJT0935	3D nozzle	Single layer	3.5mm	Copper T2	N/A	
120GJT0940	3D nozzle	Single layer	4.0mm	Copper T2	N/A	
120GJT0208	3D nozzle	Double layer	0.8mm	Copper T2	Chroming	BT210SRC/GF101/BD04K/BD08K/ BM109TC/BM111TC/BM114TC
120GJT0210	3D nozzle	Double layer	1.0mm	Copper T2	Chroming	
120GJT0212	3D nozzle	Double layer	1.2mm	Copper T2	Chroming	
120GJT0215	3D nozzle	Double layer	1.5mm	Copper T2	Chroming	
120GJT0220	3D nozzle	Double layer	2.0mm	Copper T2	Chroming	
120GJT0225	3D nozzle	Double layer	2.5mm	Copper T2	Chroming	
120GJT0230	3D nozzle	Double layer	3.0mm	Copper T2	Chroming	
120GJT0235	3D nozzle	Double layer	3.5mm	Copper T2	Chroming	
120GJT0240	3D nozzle	Double layer	4.0mm	Copper T2	Chroming	

Nozzle



Part Code	Item	Type	Tip Size	Material	Coating	Applicable Models of Laser Heads
120AU3612A	High-Speed nozzle	Double layer	1.2mm	Copper T2	Chroming	
120AU3615A	High-Speed nozzle	Double layer	1.5mm	Copper T2	Chroming	
120AU3620A	High-Speed nozzle	Double layer	2.0mm	Copper T2	Chroming	
120AU3625A	High-Speed nozzle	Double layer	2.5mm	Copper T2	Chroming	
120AU3630A	High-Speed nozzle	Double layer	3.0mm	Copper T2	Chroming	
120AU3635A	High-Speed nozzle	Double layer	3.5mm	Copper T2	Chroming	
120AU3640A	High-Speed nozzle	Double layer	4.0mm	Copper T2	Chroming	
120AU3500A	nozzle	Single layer	10mm	Copper T2	N/A	
120AU3515A	nozzle	Single layer	1.5mm	Copper T2	N/A	
120AU3520A	nozzle	Single layer	2.0mm	Copper T2	N/A	
120AU3525A	nozzle	Single layer	2.5mm	Copper T2	N/A	
120AU3530A	nozzle	Single layer	3.0mm	Copper T2	N/A	
120AU3535A	nozzle	Single layer	3.5mm	Copper T2	N/A	
120AU3540A	nozzle	Single layer	4.0mm	Copper T2	N/A	
120AU3550A	nozzle	Single layer	5.0mm	Copper T2	N/A	
120AU3560A	nozzle	Single layer	6.0mm	Copper T2	N/A	
120GJT3000	Full-Power nozzle	Double layer	1.2mm	Copper T2	Chroming	
120GJT3001	Full-Power nozzle	Double layer	1.4mm	Copper T2	Chroming	
120GJT3002	Full-Power nozzle	Double layer	1.6mm	Copper T2	Chroming	

Old type,
BM114/BM114E/
BM115 3.0/BM115E/
BS08K/BS12K

Nozzle

Part Code	Item	Type	Tip Size	Material	Coating	Applicable Models of Laser Heads
120GJT7112	Nozzle	Single layer, for MS	1.2mm	Copper T2	N/A	
120GJT7113	Nozzle	Single layer, for MS	1.3mm	Copper T2	N/A	
120GJT7114	Nozzle	Single layer, for MS	1.4mm	Copper T2	N/A	
120GJT7115	Nozzle	Single layer, for MS	1.5mm	Copper T2	N/A	
120GJT7116	Nozzle	Single layer, for MS	1.6mm	Copper T2	N/A	
120GJT7117	Nozzle	Single layer, for MS	1.7mm	Copper T2	N/A	
120GJT7118	Nozzle	Single layer, for MS	1.8mm	Copper T2	N/A	
120GJT4520	Nozzle	Single layer, for SS	2.0mm	Copper T2	N/A	
120GJT4525	Nozzle	Single layer, for SS	2.5mm	Copper T2	N/A	
120GJT4530	Nozzle	Single layer, for SS	3.0mm	Copper T2	N/A	
120GJT4535	Nozzle	Single layer, for SS	3.5mm	Copper T2	N/A	
120GJT4540	Nozzle	Single layer, for SS	4.0mm	Copper T2	N/A	
120GJT4545	Nozzle	Single layer, for SS	4.5mm	Copper T2	N/A	
120GJT4550	Nozzle	Single layer, for SS	5.0mm	Copper T2	N/A	
120GJT7210	Nozzle	Double layer, for MS	1.0mm	Copper T2	N/A	
120GJT7211	Nozzle	Double layer, for MS	1.1mm	Copper T2	N/A	
120GJT7212	Nozzle	Double layer, for MS	1.2mm	Copper T2	N/A	
120GJT7213	Nozzle	Double layer, for MS	1.3mm	Copper T2	N/A	
120GJT7214	Nozzle	Double layer, for MS	1.4mm	Copper T2	N/A	
120GJT7216	Nozzle	Double layer, for MS	1.6mm	Copper T2	N/A	
120GJT7217	Nozzle	Double layer, for MS	1.7mm	Copper T2	N/A	
120GJT7218	Nozzle	Double layer, for MS	1.8mm	Copper T2	N/A	



New type,
BM114/BM114E/
BM115 3.0/BM115E/
BS08K/BS12K

Seal Ring



Part Code	Item	Size	Material	Applicable Models of Laser Heads
1021M2110051	Seal ring (Top)	29.2x21x3.55mm	PTFE	BT240S/BM109/BM109TC/BM110/BM111/BM111TC/BM111E
11021M2110007	Seal ring (Middle/Bottom)	32.2x24x3.55mm	PTFE	BT210S/BT240S/BM109/BM109TC/BM110/BM111/BM111TC/BM111E
11021M2110005	Seal ring	42.5x4x3.2mm	PTFE	BM114/BM114S/BM114TC/BM114E/BM115/BS08K

Ceramic Body



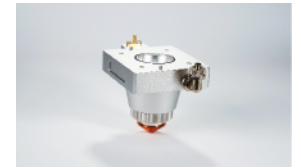
Part Code	Item	Thread Size	Applicable Models of Laser Heads
120274100B	Ceramic body	M14	BT240S/BM109/BM110/BM111/BM111E/BM114S
120572008B	Ceramic body	M8	BT210SRC/GF101 /BM109TC/BM111TC/BM114TC
120515099A	Ceramic body	M11	BM114/BM114E/BM115/BM115E/BS08K/BS12K
120515093A	Ceramic body	M8	BD04K/BD08K

Tip Transformer Wire



Part Code	Item	Length (mm)	Connector Type	Applicable Models of Laser Heads
211TTW9012	Tip transformer wire	150mm	SMB-SMA	BT240S/BM109/BM114/BM114S/BM115 BM110/BM111 (before Mar, 2022)
211TTW9002	Tip transformer wire	150mm	SMA-SMA	BT210S/BT210SRC/BM109TC/BM111TC/BM114TC/BD04K/BD08K/BS08K BM110/BM111 (since Mar, 2022)

TRA (Nozzle Assembly)



Part Code	Item	Type	Applicable Models of Laser Heads
211TRA0424	TRA (Nozzle assembly)	Flat cutting	BT210S
120A61000A	TRA (Nozzle assembly)	Flat cutting	BT240S
120AH1300A	TRA (Nozzle assembly)	Flat cutting	BM109
120AG1700A	TRA (Nozzle assembly)	Flat cutting	BM110/BM111 (before Mar. 2022)
120AG1700B	TRA (Nozzle assembly)	Flat cutting	BM110/BM111 (since Mar. 2022)
120A32000A	TRA (Nozzle assembly)	Flat cutting	BM114S
120BH0400C	TRA (Nozzle assembly)	Flat cutting	BM114
120AU2300A	TRA (Nozzle assembly)	Flat cutting	BM115 (FL150mm)
120AU2100A	TRA (Nozzle assembly)	Flat cutting	BM115 (FL200mm)
120800100B	TRA (Nozzle assembly)	Tube cutting	BM109TC/BM111TC/BM114TC
120050100B	TRA (Nozzle assembly)	Tube cutting	GF101
120BT1100A	TRA (Nozzle assembly)	Flat cutting	BS08K
120D40500A	TRA (Nozzle assembly)	Tube cutting	BD04K
120D80400B	TRA (Nozzle assembly)	Tube cutting	BD08K

Lens Tool

Part Code	Item	Applicable Models of Laser Heads
120A60007A	Lens tool	BT240S
120AH0006A	Lens tool	BM109
120AG0524A	Lens tool	BM110/BM111
120A30002C	Lens tool	BM114/BM114S
120AU2901A	Lens tool	BM115

Locking Nut

Part Code	Item	Applicable Models of Laser Heads
120A61005C	Locking nut	BT240S
120301001G	Locking nut	BM109
120610336A	Locking nut	BM110/BM111/BM114S
120572004B	Locking nut	BM109TC/BM111TC/BM114TC/GF101
120AU0509C	Locking nut	BM114
120AU0509A	Locking nut	BM115



RAYTOOLS

Europe

RayTools AG.

📍 Friedeggstrasse 13, Postfach, 3400 Burgdorf, Switzerland

✉ sales@raytools.com

🌐 www.raytools.ch

North/South America

RayTools Inc.

📍 10 Wedge Pond Road, Winchester MA 01890, United States

✉ sales@raytools.com

🌐 www.raytools.ch

Asia Pacific/South & Middle Asia/Middle East/Africa

Raytools Automation (Shanghai) Co., Ltd

📍 8 Dongbao Road, Shanghai 201613, China

✉ sales@raytools.com

🌐 www.raytools.ch

China

Shanghai Empower Technologies Co., Ltd

📍 8 Dongbao Road, Shanghai 201613, China

✉ sales@empower.cn

🌐 www.empower.cn