

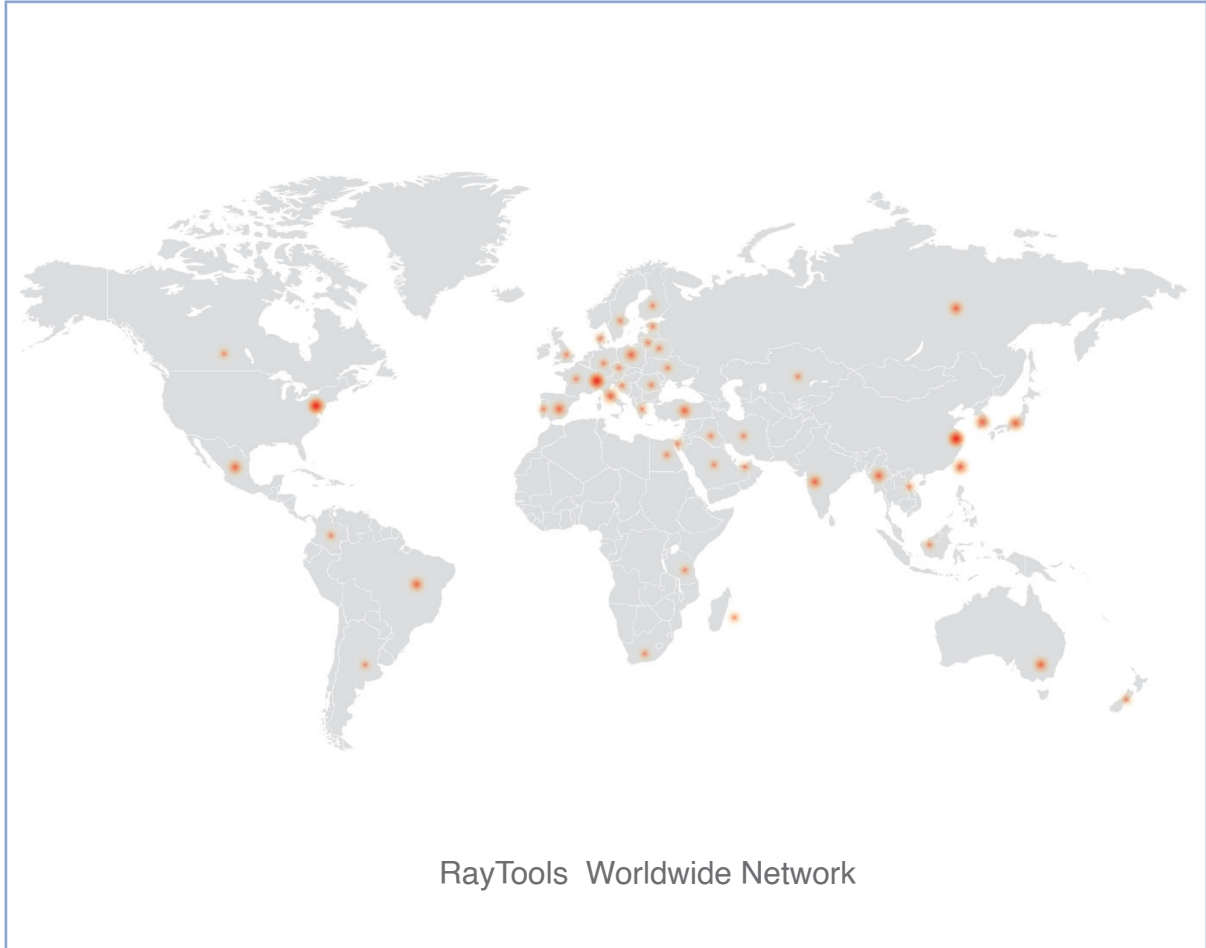
@202206

# LASER CUTTING&WELDING SOLUTIONS



RAYTOOLS

# Empower Your Laser Solutions



## About Us

- General Purpose:** Evaluation, generation and application of laser beam and control software for industrial use; custom project, knowhow and services;
- Achievements:** Industrial lasers beam delivery and automation for various applications, hybrid application concepts of high power lasers, diodes, custom projects; modular laser source and machine concepts, components, accessories and unique beam alignment technology;
- Advantages:** Independent company with vast know-how and engineering skills on demand and in line with customer requirements;

# CONTENT

## / PRECISE CUTTING

- 01 EMP5040 500\*400mm  
High Precision Micro Laser Cutting Station-Linear Motor Driven
- 02 EMP6060 600\*600mm  
High Precision Micro Laser Cutting Station-Linear Motor Driven
- 03 EMP8080 800\*800mm  
High Precision Micro Laser Cutting Station-Linear Motor Driven
- 04 EMP1250 1250\*1250mm  
High Precision Micro Laser Cutting Station-Linear Motor Driven
- 05 EMP9000  
High Precision Micro Laser Cutting Station-Linear Motor Driven
- 06 EMP ≤2KW  
High Precision Micro Laser Tube Cutting Station-Linear Motor Driven

## / ROBOTICS

- 07 OLE 1~6KW  
Robotics Cutting Kit
- 08 OLE 1~4KW  
Robotics Cutting Kit Pro
- 09 OLE 1~20KW  
Robotics Welding Kit
- 10 LaserRobot 125/175/250W  
CO<sub>2</sub> Cutting Cell

## / HANDHELD

- 11 RayEdge-1000 1KW  
4-in-1 Handheld Laser Welding Machine
- 12 RayEdge-1500 1.5KW  
4-in-1 Handheld Laser Welding Machine
- 13 OLE-HW2000 2KW  
4-in-1 Handheld Laser Welding Machine

## / WELDING & SURFACE TREATMENT

- 14 OLE-W5030 1/1.5/2/3KW  
Laser Welding Machine
- 15 OLE-HW5050 1/1.5/2/3KW  
Laser Welding Machine
- 16 XW-100 1/1.5/2/3KW  
Welding Control System
- 17 PL5050 1/1.5/2/3KW  
New Energy Welding Platform
- 18 EMP-MLP 1~6KW  
Multifunctional Laser Processing Module
- 19 EMP-PF-2-1 ≤1KW  
Powder Feeder



RAYTOOLS

# EMP5040 SERIES



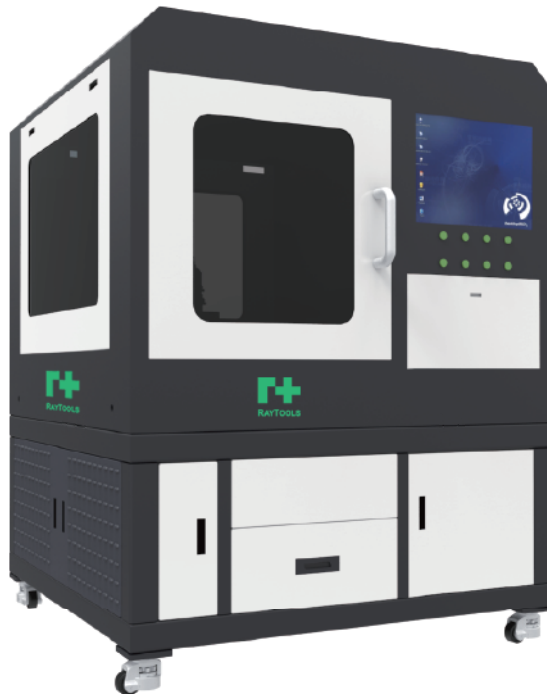
High Precision Micro Laser Cutting Station-Linear Motor Driven

Processing Size 500x400mm

High precision linear guide with high repeated positioning accuracy, less wearing and stable performance.

ECAT/AheadTechs CNC controller based on EtherCAT protocol. Friendly HMI with high flexibility and easy expanding.

Laser source and chiller are excluded.



Raytools laser cutting head along with EtherCAT height sensor to safeguard the cutting.

Highly dustproof class IP 5x.

CCD vision system is optional.

Applicable to laser cutting in jewelry, glasses, luminaire finish, kitchen appliance, mobile communication, digital products, electronics components, watch & clock, computer accessories and instruments etc

## Technical Data

Item	Specification	Brand
Linear Motor	ULMAC3 , ULMC3	RayTools
Linear Encoder	Resolution Ratio 1µm	
Linear Drive	CDHD-4D52AEB2/C- DHD-0062AEB2	Servotronix
Z-Axis Ball		Empower
Screw Moduley		
Laser Cutting Head	BT240S (other models are optional)	RayTools
Linear Guide		THK
Marble	1400* 1350*200	
Dust Cover	Mental	RayTools

X-Axis	Fast-Moving Speed	60m/min
	Effective Travel	400mm
	Positioning Accuracy (Cutting)	±0.015mm
Y-Axis	Fast-Moving Speed	60m/min
	Effective Travel	500mm
	Positioning Accuracy (Cutting)	±0.015mm
Z-Axis	Travel	100mm

Specifications subject to change without notice.

**RAYTOOLS**

# EMP6060 SERIES



High Precision Micro Laser Cutting Station-Linear Motor Driven

Processing Size 600x600mm

High precision linear guide with high repeated positioning accuracy, less wearing and stable performance.

ECAT/AheadTechs CNC controller based on EtherCAT protocol. Friendly HMI with high flexibility and easy expanding.

Applicable to laser cutting in jewelry, glasses, luminaire finish, kitchen appliance, mobile communication, digital products, electronics components, watch & clock, computer accessories and instruments etc.



Raytools laser cutting head along with EtherCAT height sensor to safeguard the cutting.

Highly dustproof class IP 5x.

CCD vision system is optional.

Laser source and chiller are excluded.

## Technical Data

Item	Specification	Brand
Linear Motor	ULMAC3 , ULMC3	RayTools
Linear Encoder	Resolution Ratio 0.5μm	
Linear Drive	CDHD-4D52AEB2/C- DHD-0062AEB2	Servotronic
Z-Axis Ball		Empower
Screw Moduley		
Laser Cutting Head	BT240S (other models are optional)	RayTools
Linear Guide		THK
Marble	1800* 1350*200	
Dust Cover	Mental	RayTools

X-Axis	Fast-Moving Speed	60m/min
	Effective Travel	600mm
	Positioning Accuracy (Cutting)	±0.015mm
Y-Axis	Fast-Moving Speed	60m/min
	Effective Travel	600mm
	Positioning Accuracy (Cutting)	±0.015mm
Z-Axis	Travel	100mm

**RAYTOOLS**

# EMP8080 SERIES



High Precision Micro Laser Cutting Station-Linear Motor Driven

Processing Size 800x800mm

High precision linear guide with high repeated positioning accuracy, less wearing and stable performance.

ECAT/AheadTechs CNC controller based on EtherCAT protocol. Friendly HMI with high flexibility and easy expanding.

Applicable to laser cutting in jewelry, glasses, luminaire finish, kitchen appliance, mobile communication, digital products, electronics components, watch & clock, computer accessories and instruments etc.



Raytools laser cutting head along with EtherCAT height sensor to safeguard the cutting.

Highly dustproof class IP 5x.

CCD vision system is optional.

Laser source and chiller are excluded.

## Technical Data

Item	Specification	Brand
Linear Motor	ULMAC3, ULMCC3	RayTools
Linear Encoder	Resolution Ratio 0.5μm	Fagor
Linear Drive	CDHD-4D52AEC2/C- DHD-1D52AEB2-R0	Servotronix
Z-Axis Ball	uyj-80h-s100	Empower
Screw Moduley		
Laser Cutting Head	BT240S (other models are optional)	RayTools
Linear Guide		THK
Marble	1800* 1350*200	
Dust Cover	Mental	RayTools

X-Axis	Fast-Moving Speed	60m/min
	Effective Travel	800mm
	Positioning Accuracy (Cutting)	±0.03mm
Y-Axis	Fast-Moving Speed	60m/min
	Effective Travel	800mm
	Positioning Accuracy (Cutting)	±0.03mm
Z-Axis	Fast-Moving Speed	60m/min
	Effective Travel	800mm
	Positioning Accuracy (Cutting)	±0.03mm
Z-Axis	Repeated Positioning Accuracy	±0.005mm
	Travel	100mm

**RAYTOOLS**

# EMP1250 SERIES



High Precision Micro Laser Cutting Station-Linear Motor Driven

Processing Size 1250x1250mm

High precision linear guide with high repeated positioning accuracy, less wearing and stable performance.

ECAT/AheadTechs CNC controller based on EtherCAT protocol. Friendly HMI with high flexibility and easy expanding.

Applicable to laser cutting in jewelry, glasses, luminaire finish, kitchen appliance, mobile communication, digital products, electronics components, watch & clock, computer accessories and instruments etc.



Raytools laser cutting head along with EtherCAT height sensor to safeguard the cutting.

Highly dustproof class IP 5x.

CCD vision system is optional.

Laser source and chiller are excluded.

## Technical Data

Item	Specification	Brand
Linear Motor	ULMAC3, ULMDC3	RayTools
Linear Encoder	Resolution Ratio 0.5μm	Fagor
Linear Drive	CDHD-0062AEC2CDHD-0 032AEC2-RO	Servotronix
Z-Axis Ball	uyj-80h-s100	Empower
Screw Moduley		
Laser Cutting Head	BT240S (other models are optional)	RayTools
Linear Guide		THK
Marble	2300* 2208*200	
Dust Cover	Mental	RayTools

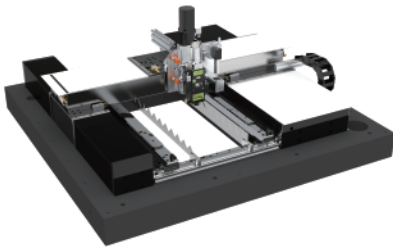
X-Axis	Fast-Moving Speed	60m/min
	Effective Travel	1250mm
	Positioning Accuracy (Cutting)	±0.02mm
Y-Axis	Fast-Moving Speed	60m/min
	Effective Travel	1250mm
	Positioning Accuracy (Cutting)	±0.02mm
Z-Axis	Travel	100mm

RAYTOOLS

# EMP9000 SERIES



Linear Motor Laser Cutting Module



Single-Drive Gantry 500x400mm



Double-Drive Gantry 600x600mm



Double-Drive Gantry 800x800mm

## Features

- 
- The frame uses marble structure with excellent rigidity and strength; The beam structure gets light-duty design with excellent acceleration performance to achieve the precise motion after CNC milling.
- 
- Fixed with THK (Japan) precise linear guide with high positioning accuracy and less wearing to get stable precision and easy maintenance in a long term.
- 
- AheadTechs CNC system based on EtherCAT to boost the flexibility and expanding, which makes smart factory and machine interconnection possible.
- 
- Supports multiple modes of axis pitch compensation to ensure the machining accuracy of the machine tool.
- 
- Support parts processing statistics and production quantity management.
-



# RAYTOOLS EMP SERIES



High Precision Micro Laser Tube Cutting Station—Linear Motor Driven

Power Rating  $\leq 2KW$

Marble base and THK linear guide rail ensure a stable and reliable platform.

High-performance DDL motor drive technology ensures good dynamic performance.

With FAGOR grating and fully enclosed loop control.

Applicable to carbon steel, stainless steel, copper, Ni-Ti and other metals.

$\pm 10$  um kerf width.



with a heat-resistant and fully enclosed shield, fitting laser processing applications

customized laser cutting head from RayTools for precision tubes

laser tube cutting specialized bus system from AheadTechs of America



## Technical Data

Item	Specification
Power Rating	$\leq 2000W$
Round Tube	1~10mm dia. ((customizable chuck)
Length Range	$\leq 6500mm$
Positioning Accuracy	$\pm 4um$
Re-Positioning Accuracy	$\pm 2um$

Item	Specifications
Processing Speed	$\leq 800mm/s$
Processing Acceleration	$\leq 0.8g$
Platform Size	1360X1200X1780mm
Weight	1000kg

# RAYTOOLS OLE SERIES



Robotics Laser Cutting Kit

Power Rating 1~6KW

World leading core components like IPG fiber laser, Fanuc robot and Raytools cutting head.

6 Axis robot cutting with easy access to complicated 3D metal parts.

Compact size to decline floor inhabitation.



Flexible options of laser power from 1KW to 6KW.

Offline robot CAM software optional to simplify application to various 3D workpieces.

Applicable to 3D or 2D metal cutting with flexible option in profile shapes and processing paths

## Technical Data

Item	Specification
Fiber Laser	IPG/Raycus (others optional)
Laser Power	1KW/1.5KW/2KW/3KW/4KW/6KW
Robot	Fanuc
Working Radiu	1811~1813mm

Item	Specifications
Payload	20kg (others optional)
Axles	6
Repeatability	$\pm 0.05 \sim \pm 0.08$ mm
Wavelength	$1080\text{nm} \pm 5$

# RAYTOOLS OLE SERIES



Robotics Laser Cutting Kit Pro

Power Rating 1~4KW

World leading core components like IPG fiber laser, Fanuc robot and Raytools cutting head.

6 Axis robot cutting with easy access to complicated 3D metal parts.

Compact size to decline floor inhabitation.



Flexible options of laser power from 1KW to 4KW.

Offline robot CAM software optional to simplify application to various 3D workpieces.

Additional programmable A/B axis to handle small contour cutting @ min. dia. 1mm

## Technical Data

Item	Specification
Fiber Laser	IPG/Raycus (others optional)
Laser Power	1KW/1.5KW/2KW/3KW/4KW
Robot	Fanuc
Working Radius	1813mm
Payload	35kg
Axles	6
Min.Cutting Diameter	1mm(accuracy±0.1)

Item	Specifications
Repeatability	± 0.05~ ± 0.08mm
Wavelength	1080nm± 5
Cutting Head	Raytools GF101 + GF102
Operating Temperature	10-40°C
Power Supply	220V/Single Phase/50 or 60Hz; 380V/3-Phase/50 or 60Hz
Cooling	Water cooling

Specifications subject to change without notice.

# RAYTOOLS OLE SERIES



Robotics Laser Welding Kit

Power Rating 1~20KW

World leading core components like IPG fiber laser, Fanuc robot and Raytools cutting head.

6 Axis robot cutting with easy access to complicated 3D metal parts.

Compact size to decline floor inhabitation.



Flexible options of laser type (fiber/diode/blue laser) and power from 1KW to 20KW

Offline robot CAM software optional to simplify application to various 3D workpieces.

Applicable to metal welding with flexible option in profile shapes and processing paths.

## Technical Data

Item	Specification
Fiber Laser	IPG/Raycus (others optional)
Laser Power	1KW~20KW
Robot	Fanuc
Working Radius	1811~1813mm
Payload	20kg(other optional)
Axles	6
Repeatability	± 0.05~ ± 0.08mm

Specifications subject to change without notice.

Item	Specifications
Wavelength	Fiber 1064nm/ Diode 915nm/ Blue 450nm
Cutting Head	Raytools GF101 + GF102
Operating Temperature	10-40°C
Power Supply	220V/Single Phase/50 or 60Hz; 380V/3-Phase/50 or 60Hz
Cooling	Water cooling

RAYTOOLS

# LaserRobot



CO<sub>2</sub> Laser Cutting Cell

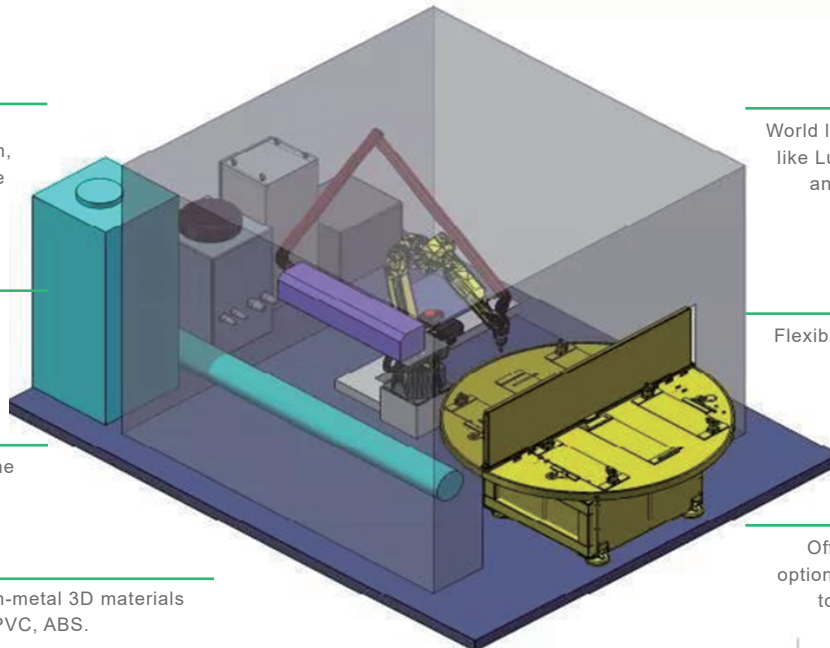
Power Rating 125/175/250W

Wide application in industries of automobile internal/external finish, daily plastics and home appliance plastics.

6 Axis robot cutting with easy access to complicated 3D non-metal parts.

Articulated laser arm to deliver the laser beam.

Commonly used for cutting of non-metal 3D materials like PP, PC, PET, PUR, PA, PE, PVC, ABS.



World leading core components like Luxinar laser, Fanuc robot and Raytools cutting head.

Flexible options of laser power from 125W to 250W.

Offline robot CAM software optional to simplify application to various 3D workpieces.

## Technical Data

Item	Specification
CO <sub>2</sub> Laser	Luxinar (UK)/Others optional
Laser Power	125W/175W/250W
Robot	Fanuc
Working Range	2000x1400x1400mm (others optional)
Payload	20kg
Axles	6

Specifications subject to change without notice.

Item	Specifications
Repeatability	± 0.05- ± 0.08mm
Wavelength	10600nm
Cutting Head	Raytools AK230
Articulated Laser Arm	Raytools ARM200
Power Supply	380V/50Hz/60Hz/3-phase (Others optional)
Cooling	Water cooling

**RAYTOOLS**

# RayEdge-1000



4-in-1 Handheld Laser Welding Machine

Power Rating **1KW**

Compact integrated design with easy operation.

Wobble welding to improve welding capacity to seam.

Wire feeder included to expand application range.

Multiple safety protection with auto beam off function once the nozzle goes away from workpiece.



"4-in-1 function" (Weld/Cut/WeldSeam Clean/Remote Clean). Quick-change structure of tip assembly from laser processing head.



feeder

## Technical Data

Item	Specification
Laser	Maxphotonics/Raycus
Laser Power	1000w
Laser Wavelength	1080nm
Fiber Length	10m
Fiber Core	25um/50um
Welding Speed	0-20mm/s
Welding Style	Wobble (single axis)
Wobbling Range	0-5mm (Weld)/0-10mm (WeldSeam Clean)/0-80mm (Remote Clean)
Welding Seam Width	Max. 5mm
Welding Thickness	Max. 2mm (SS, MS and 5 series AL) based on 1000W laser
Cooling	Water Cooling
Cover Glass	Φ20mm*3mm
Collimation Length	60mm

Item	Specifications
Focus Length	150mm
Power Supply	220V/Single Phase/50 or 60Hz
Overall Dimension	910x490x800mm
Transportation Dimension	1050x600x850mm
Weight	~120kg
Transportation Weight	~150kg
Wire Feeder	Included
Wire Diameter	0.8/1.0/1.2/1.6mm
Feeding Speed	0.1-18m/min
Wire Material	SS/AL Magnesium/Copper
Overall Dimension	440x250x580mm
Transportation Dimension	470x310x620mm
Weight	14kg
Transportation Weight	~15kg

Specifications subject to change without notice.

**RAYTOOLS**

# RayEdge-1500



4-in-1 Handheld Laser Welding Machine

Power Rating **1.5KW**

Compact integrated design with easy operation.

Wobble welding to improve welding capacity to seam.

Wire feeder included to expand application range.

Multiple safety protection with auto beam off function once the nozzle goes away from workpiece.



"4-in-1 function" (Weld/Cut/WeldSeam Clean/Remote Clean). Quick-change structure of tip assembly from laser processing head.



feeder

## Technical Data

Item	Specification
Laser	Maxphotonics/Raycus
Laser Power	1500w
Laser Wavelength	1080nm
Fiber Length	10m
Fiber Core	50um
Welding Speed	0-20mm/s
Welding Style	Wobble (single axis)
Wobbling Range	0-5mm (Weld)/0-10mm (WeldSeam Clean)/0-80mm (Remote Clean)
Welding Seam Width	Max. 5mm
Welding Thickness	Max. 3mm (SS, MS and 5 series AL) based on 1500W laser
Cooling	Water Cooling
Cover Glass	Φ20mm*3mm
Collimation Length	60mm

Item	Specifications
Focus Length	150mm
Power Supply	220V/Single Phase/50 or 60Hz
Overall Dimension	910x490x800mm
Transportation Dimension	1050x600x850mm
Weight	~125kg
Transportation Weight	~155kg
Wire Feeder	Included
Wire Diameter	0.8/1.0/1.2/1.6mm
Feeding Speed	0.1-18m/min
Wire Material	SS/AL Magnesium/Copper
Overall Dimension	440x250x580mm
Transportation Dimension	470x310x620mm
Weight	14kg
Transportation Weight	~15kg

Specifications subject to change without notice.



RAYTOOLS

# OLE-HW2000 SERIES



4-in-1 Handheld Laser Welding Machine

Power Rating **2KW**

Compact integrated design with easy operation.

Wobble welding to improve welding capacity to seam.

Wire feeder included to expand application range.

Multiple safety protection with auto beam off function once the nozzle goes away from workpiece.



“4-in-1 function” (Weld/Cut/WeldSeam Clean/Remote Clean). Quick-change structure of tip assembly from laser processing head.



feeder

## Technical Data

Item	Specification
Laser	Maxphotronics/Raycus
Laser Power	2000W
Laser Wavelength	1080nm
Fiber Length	10m
Fiber Core	50um
Welding Speed	0-20mm/s
Welding Style	Wobble (single axis)
Wobbling Range	0-5mm (Weld)/0-10mm (WeldSeam Clean)/0-80mm (Remote Clean)
Welding Seam Width	5mm
Welding Thickness	Max. 4mm (SS, MS and 5 series AL) based on 2000W laser
Cooling	Water Cooling
Cover Glass	Φ20mm*3mm

Item	Specifications
Collimation Length	60mm
Focus Length	150mm
Power Supply	380V/3-Phase/50 or 60Hz
Overall Dimension	1053x800x1225mm (LxWxH)
Weight	~280kg
Wire Feeder	Included
Wire Diameter	0.8/1.0/1.2/1.6mm
Feeding Speed	0.1-18m/min
Wire Material	SS/AL Magnesium/Copper
Overall Dimension	440x250x580mm
Transportation Dimension	470x310x620mm
Weight	14kg
Transportation Weight	~15kg

Specifications subject to change without notice.



# RAYTOOLS OLE-W5030

SERIES



Laser Welding Machine

Power Rating 1/1.5/2/3 KW

Compatible to teaching, graphics import and draw.

Rich process handling, PSO, power ascent & descent and preheating processing.

Flexible extending, twin-workstation, exchange table or 4-workstation rotation, etc.



Flexible combination of laser, welding head and working size in accordance with exact application.

Wide range application such as R&D, sample welding, small-scaled production and etc.

## Technical Data

Item	Specification
Working Area (mm)	500x300x300 (Cantilever type)
Positioning Accuracy (mm)	±0.02
Repeat Positioning Accuracy (mm)	±0.01
Welding Motion Controller	Raytools
Welding Speed (mm/s)	30-100
Servo& Drive	AheadTechs
Display	19" LED
Power Consumption (kw)	4~11
Welding Head	BW210/BW240/BF320/BF330M

Specifications subject to change without notice.

Item	Specification
Laser	IPG/Maxphotonics/Raycus
Laser Power (W)	1000/1500/2000/3000
Chiller	S & A
Ambient Temperature (°C)	0~40
Ambient Humidity (%)	<70
Power Supply	AC 380V±10%, 50Hz/60Hz, 3-Phase
Overall Size (mm)	1000*950*1500 (W*D*H)
Weight (kg)	~220
Optional	Dust Collector
Optional	Wire Feeding

# RAYTOOLS OLE-W5050

SERIES



Laser Welding Machine

Power Rating 1/1.5/2/3 KW

Compatible to teaching, graphics import and draw.

Rich process handling, PSO, power ascent & descent and preheating processing.

Flexible extending, twin-workstation, exchange table or 4-workstation rotation, etc.



Flexible combination of laser, welding head and working size in accordance with exact application.

Wide range application such as R&D, sample welding, small-scaled production and etc.

## Technical Data

Item	Specification
Working Area (mm)	500x500x400 (Gantry type)
Positioning Accuracy (mm)	±0.02
Repeat Positioning Accuracy (mm)	±0.01
Welding Motion Controller	Raytools
Welding Speed (mm/s)	30-100
Servo& Drive	AheadTechs
Display	19" LED
Power Consumption (kw)	4~11
Welding Head	BW210/BW240/BF320/BF330M

Specifications subject to change without notice.

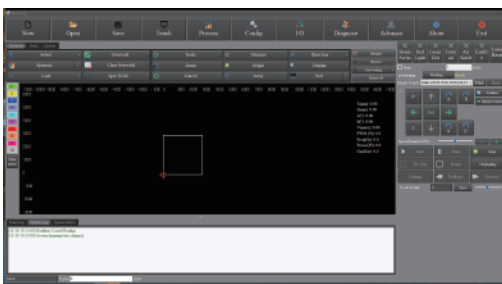
Item	Specification
Laser	IPG/Maxphotonics/Raycus
Laser Power (W)	1000/1500/2000/3000
Chiller	S & A
Ambient Temperature (°C)	0~40
Ambient Humidity (%)	<70
Power Supply	AC 380V±10%, 50Hz/60Hz, 3-Phase
Overall Size (mm)	1000*1300*1850 (W*D*H)
Weight (kg)	~250
Optional	Dust Collector
Optional	Wire Feeding

# RAYTOOLS XW-100 SERIES

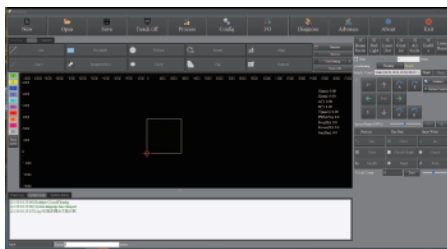
Welding Control System



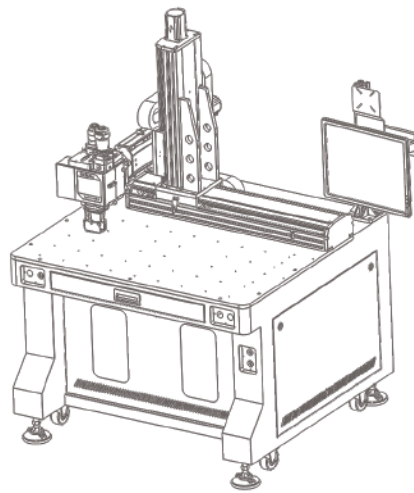
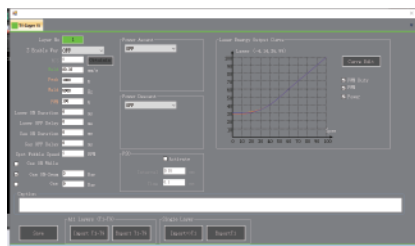
## Main Interface



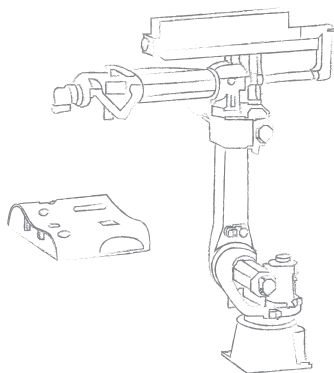
## Parameters



## Settings



application for welding platform or robot welding.



application for multi-axis motion welding or robot welding.

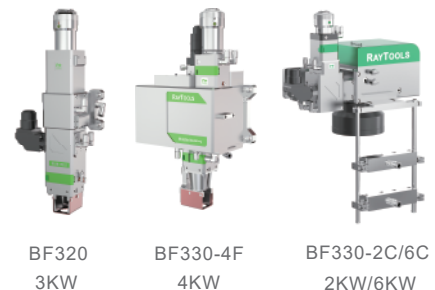
## Process Feature

- adjustment of laser power ascent and descent, optimized start and end technique
- power curve adjustable and corner treatment
- with unique PSO function, uniform distribution of energy in welding process, and good welding consistency.
- able to control multiple types of galvo laser welding heads and laser spot.

## Control Feature

- both EtherCAT serial bus servo and pulse controlled servo applicable.
- multi-axis motion and multi-position control
- with processing modes like teaching mode of hand-wheel and interface, and image inputting
- checking the alarm information online and looking up the corresponding solution at once.
- with intuitive monitoring interface,
  - flexible configurations for user defined input and output

## Welding Heads Applicable



BF320  
3KW

BF330-4F  
4KW

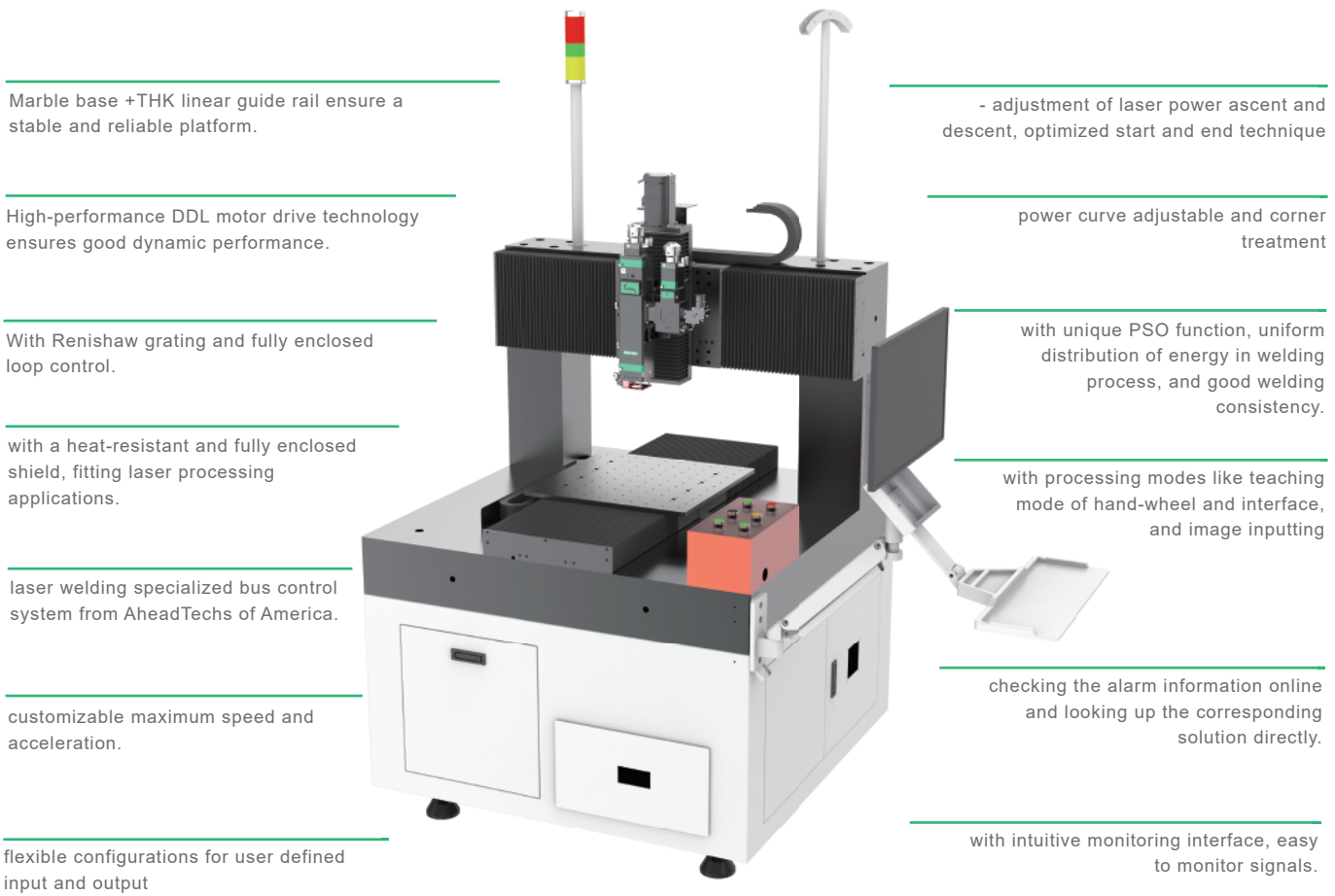
BF330-2C/6C  
2KW/6KW

# RAYTOOLS PL5050 SERIES



New Energy Welding Platform

Processing Range 500\*500\*200mm



Marble base +THK linear guide rail ensure a stable and reliable platform.

High-performance DDL motor drive technology ensures good dynamic performance.

With Renishaw grating and fully enclosed loop control.

with a heat-resistant and fully enclosed shield, fitting laser processing applications.

laser welding specialized bus control system from AheadTechs of America.

customizable maximum speed and acceleration.

flexible configurations for user defined input and output

- adjustment of laser power ascent and descent, optimized start and end technique

power curve adjustable and corner treatment

with unique PSO function, uniform distribution of energy in welding process, and good welding consistency.

with processing modes like teaching mode of hand-wheel and interface, and image inputting

checking the alarm information online and looking up the corresponding solution directly.

with intuitive monitoring interface, easy to monitor signals.

## Technical Data

Item	Specification
Welding Head	User defined
Platform Processing Range	500X500X200mm
Positioning Accuracy	±4um
Re-positioning Accuracy	±2um

Item	Specifications
Processing Speed	≤1000mm/s
Running Acceleration	< 5g (customizable)
Platform Size	1200X1200X1900mm
Weight	1000kg

RAYTOOLS

# EMP-MLP SERIES



Multifunctional Laser Processing Module

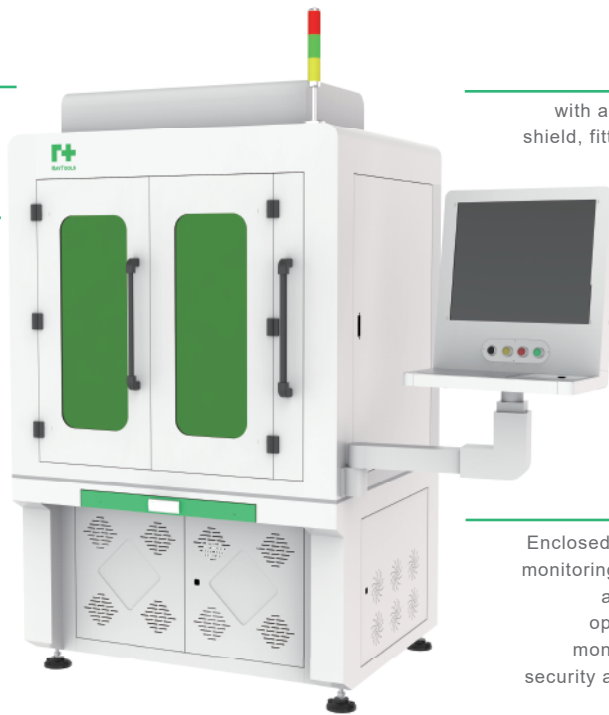
Power Rating **1-6KW**

Applicable to the CNC system independently developed by RayTools and able to meet the needs of certain functions and customized interfaces.

Cost effective for providing high precision servo or marble linear motor motion unit according to application requirements

a wide range of applications based on optional AB axis motion units to enable a variety of motion tracks in processing, including lines, circles, curves, surfaces and five axes

equipped with multi-functional laser processing head independently developed by Empower, fast switching among laser welding, cladding and hardening with different power rating without replacing light source and optical device, perfect for initial processing tests and scientific researches.



with a heat-resistant and fully enclosed shield, fitting laser processing applications

applicable to the processing of a variety of metal materials, including iron base, nickel base, copper base, aluminum base, titanium base, etc.

optional in-and-out workbench and corresponding fixture for customizations and batch processing.

Enclosed sheet metal structure, with video monitoring, anti-collision module, lens heat alarm and gas pressure alarm and optional real-time APP performance monitoring unit, etc. to ensure human security and machine safety in processing.

## Technical Data

Item	Specification
Function	Fast switching between laser welding, cladding and hardening
Laser	Fiber/Diode
Power Rating	1-6KW (customizable for higher power rating)
Laser Wavelength	900-1100nm
Positioning Accuracy	±0.1mm
Re-positioning Accuracy	±0.05mm
Processing Speed	≤200mm/s
Processing Range	600*400*300mm(customizable)
Powder	3-way, 4-way, annular, high-speed, wide
Feeding Nozzle	band, inner hole nozzle optional

Item	Specification
Hardening Size	5*5/10*2/15*2/20*4mm (customizable)
Focal Spot (for welding and cladding)	manual adjustment available; adjustable range customizable
Two-axis Turntable	Configurable
Inert Gas Chamber	Configurable
Safety Monitoring Module	Processing monitoring camera, safety door alarm, processing head anti-collision module - configurable
Real-time Process Monitoring Module	Modules include infrared temperature measurement, closed-loop temperature control, high-speed camera, configurable

RAYTOOLS

# EMP-PF-2-1 SERIES



Powder Feeder

Power Rating 1KW

### Adjustable Powder Feeding Speed

The powder will be transported to the processing area by gas. Adjust the powder feeding speed by adjusting the rotary speed and the powder plate size.

### High Accuracy of Powder Feeding

The powder feeder is independent and controllable. With double-way of powder feeding and the high precision servo motor, it has high precision powder feeding.



### Customizable Interface

The interface can be customized according to customer's requirements.

### High Stability

With internal control and external control of two operating modes and pressure alarm function, mostly meet the needs of processing stability.

## Technical Data

Power Rate	≤1000W
Powder Feeding Funnel	two-way, independent and controllable PLC
Dimension	600X500X1450mm
Input	220VAC, 50HZ

Powder Size	20-200μ
Feeding Plate Speed	0-20 rpm CV
Send Powder Repeat Precision	< ±2%
Gas Supply	Nitrogen/Argon

Specifications subject to change without notice.



## Europe

### RayTools AG.

📍 Friedeggstrasse 13, Postfach, 3400 Burgdorf, Switzerland

✉ [sales@raytools.com](mailto:sales@raytools.com)

🌐 [www.raytools.ch](http://www.raytools.ch)

## North/South America

### RayTools Inc.

📍 10 Wedge Pond Road, Winchester MA 01890, United States

✉ [sales@raytools.com](mailto:sales@raytools.com)

🌐 [www.raytools.ch](http://www.raytools.ch)

## Asia Pacific/South & Middle Asia/Middle East/Africa

### Raytools Automation (Shanghai) Co., Ltd

📍 8 Dongbao Road, Shanghai 201613, China

✉ [sales@raytools.com](mailto:sales@raytools.com)

🌐 [www.raytools.ch](http://www.raytools.ch)

## China

### Shanghai Empower Technologies Co., Ltd

📍 8 Dongbao Road, Shanghai 201613, China

✉ [sales@empower.cn](mailto:sales@empower.cn)

🌐 [www.empower.cn](http://www.empower.cn)